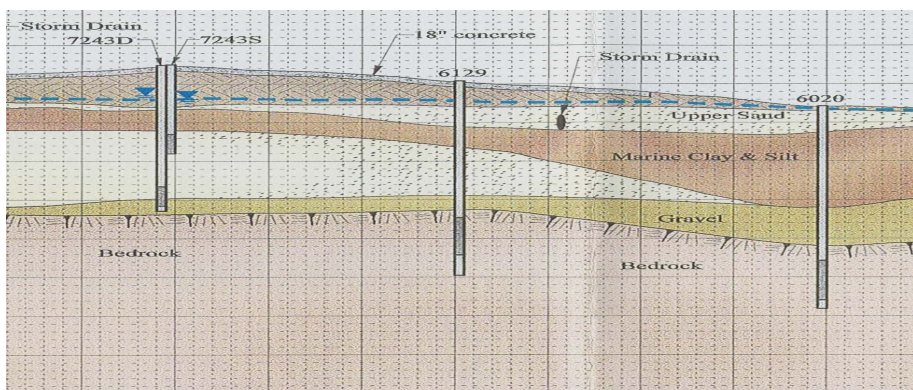


United States Air Force Flightline Remedial Action Pease Air Force Base, New Hampshire



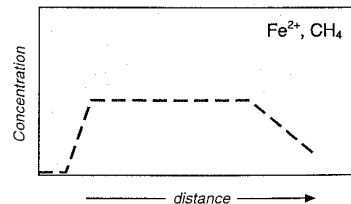
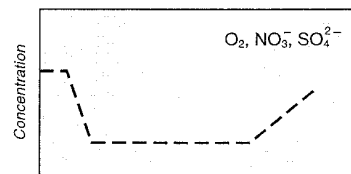
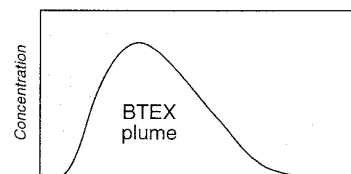
Pease Air Force Base is located in the City of Portsmouth, New Hampshire. The Flightline refueling system, covering approximately 780 acres, was located in the center of the Air Force Base. Built in the mid-1950s to facilitate efficient refueling of military aircraft on the parking apron, the fuel system consisted of 10 pump houses (each with four 50,000 gallon underground storage tanks (USTs)) and 30 hydrant laterals.

Over 60 dissolved phase ground water plumes and an estimated 40,000 cubic yards of contaminated soil were detected across the Flightline. This soil and ground water contamination was believed to originate from jet fuels and aviation gas associated with the USTs and hydrant laterals.



A Remedial Action Plan was designed and implemented. Key components of this work:

1. Several contaminant fate and transport evaluations were performed to determine the risk posed by soil and ground water contamination to a critical City of Portsmouth water supply well situated in the center of the Flightline.
2. Over 20 free product recovery systems were designed and constructed.
3. Technical assessments of the effectiveness of natural attenuation were performed for all 60 dissolved phase ground water plumes.
4. Source removal strategies were designed and implemented for five areas.



PROJECT HIGHLIGHTS:

- ✓ Established and maintained client and regulator satisfaction throughout the development and implementation of the Remedial Action Plan.
- ✓ Completed all remedial actions on the Flightline within budget and schedule despite addressing a large geographic area, complex geology and over 600 wells with historic data requiring multiple analyses,
- ✓ Streamlined the sampling and analysis program resulting in a cost saving of over \$500,000 in labor and analytical costs.
- ✓ Received 100% performance rating from Air Force for excellence in technical deliverables